

AC Single Phase Series Filters

## AREL



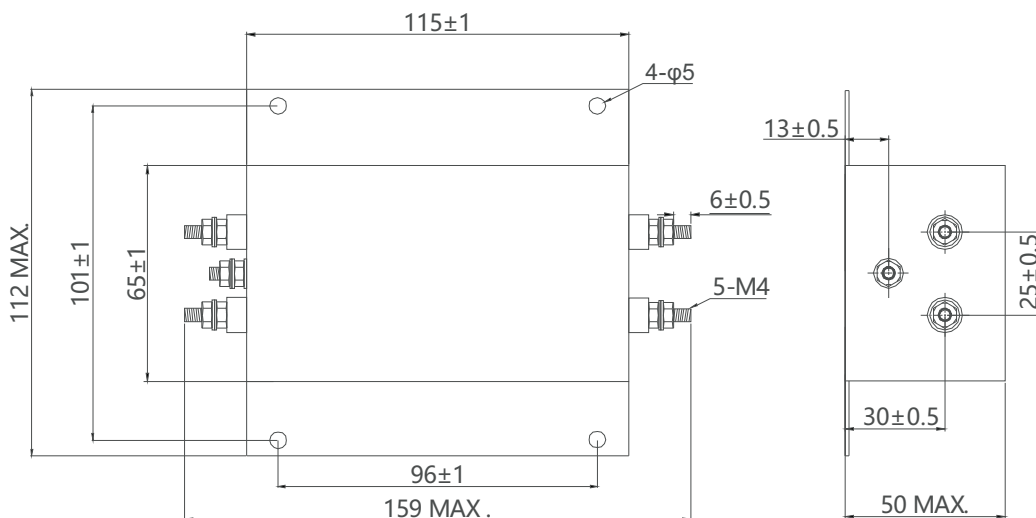
### TECHNICAL DATA

**PART. NO:** A-FT131-30-2

Safety approval:

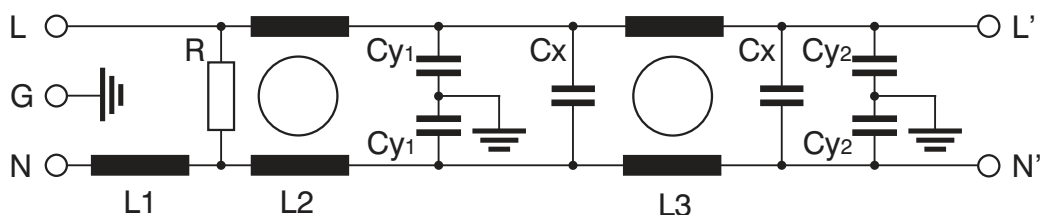
Reference standard: IEC 60939-2 IEC 60939-1

### 1. DIMENSIONS:



Tolerance:  $\pm 1.0$  Unit: mm

### 2. ELECTRICAL SCHEMATICS:



### 3. ELECTRICAL PARAMETER (Value @ 20°C):

L1:  $16\mu\text{H}$  (+50%-30%)

L2/L3:  $2 \times 1.6\text{mH}$  (+50%-30%)

Cx:  $2 \times 3.3\mu\text{F}$  ( $\pm 20\%$ )

Cy1:  $2 \times 22\text{nF}$  ( $\pm 20\%$ )

Cy2:  $2 \times 4.7\text{nF}$  ( $\pm 20\%$ )

R:  $1.0\text{M}\Omega$  ( $\pm 5\%$ )

## AC Single Phase Series Filters

# AREL

### TECHNICAL DATA

**PART. NO:** A-FT131-30-2

Safety approval: **CE** **CQC** **CCC**

Reference standard: **UL** **DE** IEC 60939-2 IEC 60939-1 **ROHS**



#### 4. ELECTRICAL CHARACTERISTICS:

4.1. Rated voltage ----- 110/250VAC

4.2. Rated current ----- 30A@40°C

4.3. Rated frequency ----- 50/60Hz

4.4. Test voltage (1min):

A) N---L ----- 1760VDC

B) N, L — G ----- 2000VAC

(Voltage rise slowly as stated speed  $\leq 150V/S$  from 0 voltage)

4.5. Insulation resistance -----  $>200M\Omega/500VDC$

4.6. Leakage current -----  $<6.0mA@250VAC/50Hz$

(It is tested on the condition of 20°C)

4.7. Insertion loss (dB): (It is tested on empty load and 50 $\Omega$ )

COMMON MODE IN 50 OHM SYSTEM					
FREQUENCY - MHz					
.15	1.5	3.0	5.0	15	30
60	65	55	46	30	22
DIFFERENTIAL MODE IN 50 OHM SYSTEM					
FREQUENCY - MHz					
.15	1.5	3.0	5.0	15	30
65	64	60	52	40	33

4.8. Climatic category ----- 25/100/21

#### 5. CONNECTION:

5.1. Connection style M4 ----- Recommended torque (Nm) 1.8 - 2.0

<b>Rev. A</b>	28/09/21	Change case dimension
<b>Rev. B</b>	11/10/21	Update case dimension
<b>Rev. C</b>		