

DC Series Filters

AREL



Features & Applications

Specially designed for suppressing the noise on DC power line
 Excellent low and high frequency attenuation effect
 Highly cost-effective, various connection ways
 Suitable for all kinds of DC electronic equipments, such as switching power supply, PBX and so on

Safety approval:

Reference standard:

Technical data

Rated Voltage	24VDC~250VDC	Rated Current@40°C	0.5A~250A
Operating Frequency	DC	Climatic Category	25/085/21

Datasheet with outline drawing, dimensions and graphic insertion loss, are available on request.

Tabulates

Part No.	Rated current @40°C	Electrical Schematics	Termination		
A-FT121D-20	20A	Fig.1	M4	○	—
A-FT121D-30	30A	Fig.1	M4	○	—
A-FT121D-50	50A	Fig.1	M6	—	—
A-FT121D-80	80A	Fig.1	M8	—	—
A-FT1200D-1	1A	Fig.2	—	—	○
A-FT1200D-3	3A	Fig.2	—	—	○
A-FT1200D-6	6A	Fig.2	—	○	○
A-FT1200D-10	10A	Fig.2	—	○	—

Electrical schematics

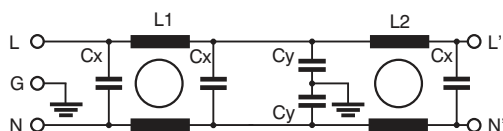


Fig. 1

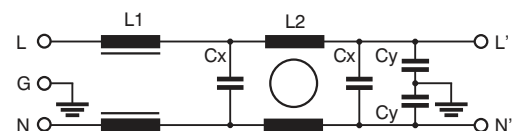


Fig. 2